

Swinburne University of Technology The Melbourne Design Experience 5–25 July 2009



The Faculty of Design at Swinburne University of Technology in Melbourne offers you the opportunity to be part of an exciting three-week design study tour that includes experiencing the State of Design Festival.

Program overview

The Melbourne Design Experience is aimed at those interested in the areas of graphic, communication and multimedia design.

It is an intensive program of events, seminars, visits to studios and museums and project-based learning activities that will give you an insight into Australian culture and design.

Participants will be exposed to Melbourne's creative and cultural heart during the vibrant State of Design Festival.

For further information about the festival visit www.stateofdesign.com.au

Swinburne's Faculty of Design, which incorporates the National Institute for Design Research, is one of Australia's premier design institutions.

It currently has 1600 students from over 40 different countries, and Swinburne design students are well known for winning various design awards.

The faculty offers design programs that range from bachelors to masters and PhDs. It is located in the inner-city suburb of Prahran, an area known for its emphasis on design, fashion and innovation.

What you will learn

The Melbourne Design Experience consists of lectures and hands-on project work that aim to develop the fundamentals of design exploration and thinking. Students will complete a communications/multimedia project exploring cultural experiences and difference, which will be showcased at the end of the program.

During the State of Design Festival, students have the opportunity to engage with contemporary designers from different cultures and explore various modes and methods across the design disciplines.

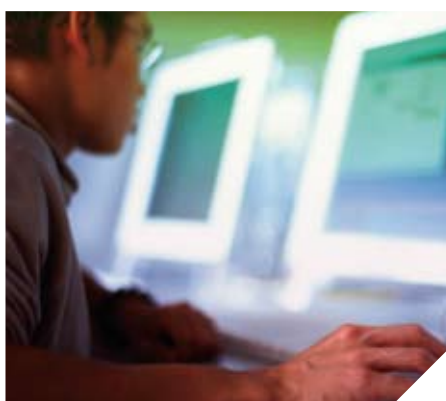
The program has been designed to cater for different levels of knowledge and experiences of design.

As well as having the opportunity to work with lecturers from Swinburne Faculty of Design at Prahran, participants will also be part of the on-campus student community in their accommodation at Swinburne's Hawthorn campus. Cultural and tourism related activities will also provide participants with an introduction to the city of Melbourne and an insight into Australian society and culture, including its business environments, multicultural food and lifestyle.



**BEST IN
MELBOURNE
FOR TEACHING
QUALITY***

* Source: *The Good Universities Guide 2009*



The Melbourne Design Experience

5–25 July 2009

About Swinburne

- ▶ Established in 1908
- ▶ Foundation studies through to PhD
- ▶ Best university in Melbourne for Teaching Quality*
- ▶ Australia's only member of the European Consortium of Innovative Universities (ECIU)
- ▶ Five campuses in Melbourne and one in Sarawak, Malaysia
- ▶ Hawthorn and Prahran campuses located in exclusive and fashionable inner-city suburbs, 10 minutes from the city centre
- ▶ Total students: 26,000
- ▶ International students: 5000
- ▶ Full-time staff: 2022

* Source: *The Good Universities Guide 2009*

Melbourne, Australia

Melbourne is regarded as one of the world's most liveable cities and is Australia's cultural, culinary, education and sporting capital. A mild climate, affordable living costs, a thriving cultural scene, a multicultural community, an extensive public transport network and an abundance of parkland combine to provide a great way of life for locals and visitors.

For more information on Melbourne, visit www.international.swinburne.edu.au/arrival/livingmelb

Program duration

The three-week program commences on 5 July. It coincides with the State of Design Festival held in July. The study component runs for 15 hours per week with three hours of study contact per day. Class sizes will typically be between 12 and 18 students. The study program is accredited as part of Swinburne's academic programs and, as such, students will receive 12.5 credit points. Participants may wish to transfer these credit points back to their home institution or contribute the credit points towards further study at Swinburne.

Accommodation

Students will be housed in the Swinburne Place apartments, designed by award-winning architects.

For further information on accommodation, visit www.international.swinburne.edu.au/accommodation

Transport

Participants are responsible for arranging and paying for their own flight costs to and from Australia and any interstate/international airfares. Airport transfer from Tullamarine airport to Swinburne Place accommodation plus public transport tickets for travel within Melbourne are included in the program fee.

Travel and health insurance

Travel, accident and medical insurance cover are not included in program fees. It is a requirement of the program that this be arranged prior to departure.

Meals

Student accommodation is self-catering and as such only breakfast will be provided.

Program inclusions

- ▶ Airport pickup from Melbourne's Tullamarine airport
- ▶ Accommodation at Swinburne Place, Hawthorn
- ▶ Breakfast vouchers for local café
- ▶ Three-week public transport ticket
- ▶ Orientation and city tour
- ▶ Academic lectures, presentations and workshops
- ▶ Attendance at events within the State of Design Festival
- ▶ Trips to Melbourne museums and places of design interest
- ▶ Ticket to an Australian Rules football match
- ▶ End of program certificate ceremony and display of final project
- ▶ Ongoing student support

Further assistance can be provided in organising recreational trips and weekend activities.

Program cost

The cost per student based on the program inclusions outlined above is A\$5900. Please see website for additional costs, program confirmation, fee payment and cancellation policy details.



How to apply

Contact the Study Abroad office located at:
Hawthorn campus
Telephone +61 3 9214 8890
Facsimile +61 3 9818 3645
Email: studyabroad@swinburne.edu.au

www.international.swinburne.edu.au/edabroad

The information contained in this flyer was correct at the time of printing (December 2008) but is subject to alteration or amendment without notice by Swinburne.

CRICOS Provider number 00111D

SP1149-19-1208

**AN INTENSIVE
PROGRAM THAT
WILL GIVE YOU
AN INSIGHT INTO
AUSTRALIAN
CULTURE, DESIGN
AND CREATIVITY**